

INTRODUCTION

Caymon's designers are convinced that one of the most important indicators to identify a company, is its customers: the people that once bought our products for the first time and experienced them in everyday life, getting to know them better and eventually keep buying them.

Caymon offers a vast range of installation products, ranging from racks, microphone, music and speaker stands to brackets, flight cases, adapters, soft bags and accessories.

This vast assortment for its parts can only be reflected on variety of customers and thus applications they bring, which vary from but not exclusive to churches to concert halls, nightclubs to cultural centers, individual musicians and symphonic orchestras.

An extensive product range requires a clear vision on past, present and future. That's why, for many years ago, Caymon's foundation has been based on four solid principles, which have been our company standards ever since: the aim to look ahead and anticipate worldwide tendencies, the aspiration to combine functionality with contemporary design, the decision to settle for no less than the highest quality and continue to keeping in mind our customers be they existing, new or potential customers.

These standards remind us where we are coming from and what we are aiming for, in an ever-changing, ever-innovating market.



TABLE OF CONTENT

RACKS

SPR SERIES	6
WPR SERIES	7
SPR/WPR ACCESSORIES	8
PR SERIES	10
HPR SERIES	11

19" ACCESSORIES

CASY SERIES	14
BLIND PLATES	17
CABLE ORGANIZER	18
SCREWS & CAGE NUTS	18
RACK PLATES	19
POWER DISTRIBUTION	20
RACK SHELVES	21
DRAWERS	22

ACCESSORIES

RIGGINGS & BRACKETS	24
---------------------	----



RACKS

SPR SERIES

Optimal protection in fixed installations is guaranteed with the SPR series 19" racks which are available in a wide range of heights and depths. They are constructed using a cold steel frame with a thickness of 2 mm and 1,2 mm plates finished in a black (RAL9004) powder coating with fine structure. They come standard with a tempered glass front and steel rear door, both fitted with easy-swing locks fitted as standard. Other features for this product range are removable sides, in depth adjustable 19" profiles, including leveling feet and wheels, ...



- SPR618**
19" rack
18 units
600mm depth
- SPR627**
19" rack
27 units
600mm depth
- SPR632**
19" rack
32 units
600mm depth
- SPR832**
19" rack
32 units
800mm depth
- SPR642**
19" rack
42 units
600mm depth
- SPR842**
19" rack
42 units
800mm depth

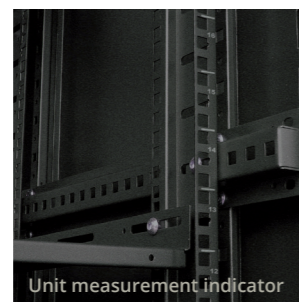
Specifications

ARTICLE	DIMENSIONS (H x W x D)	USABLE DEPTH	HEIGHT WITH WHEELS	WEIGHT
SPR618	918 x 600 x 600 mm	540 mm	988 mm	52 kg
SPR627	1318 x 600 x 600 mm	540 mm	1388 mm	57 kg
SPR632	1540 x 600 x 600 mm	540 mm	1610 mm	74 kg
SPR832	1540 x 600 x 800 mm	740 mm	1610 mm	82 kg
SPR642	1985 x 600 x 600 mm	540 mm	2055 mm	85 kg
SPR842	1985 x 600 x 800 mm	740 mm	2055 mm	98 kg

- Keylock on both doors and side panels
- Reversible door position
- In depth adjustable 19" profiles (front & rear)
- Cable entry on top & bottom
- Ventilation grid on top
- 50 mm wheels + leveling feet included
- Punched square holes for use with snap-in cage nuts
- Static load up to 800 kg



Removable sides



Unit measurement indicator



Grill door option

- SPR18GL** Grill door for SPR618
- SPR27GL** Grill door for SPR627
- SPR32GL** Grill door for SPR632/832
- SPR42GL** Grill door for SPR642/842

WPR SERIES

Maximum installation flexibility is guaranteed with the WPR series wall mountable 19" racks. Their flexible structure allows installation at any location while their different heights and depths provide a solution for a wide variation of applications. They are constructed using a cold rolled steel frame with a thickness of 1,5 mm and 1,2 mm plates, finished in a black (RAL9004) powder coating. They come standard with a tempered glass front and steel rear door, both fitted with easy-swing locks fitted as standard. Other features for this product range are removable sides, in depth adjustable 19" profiles, ventilation grid on top panel, ...



- WPR406**
19" wall rack
6 units
450mm depth
- WPR606**
19" wall rack
6 units
600mm depth
- WPR409**
19" wall rack
9 units
450mm depth
- WPR609**
19" wall rack
9 units
600mm depth
- WPR412**
19" wall rack
12 units
450mm depth
- WPR612**
19" wall rack
12 units
600mm depth

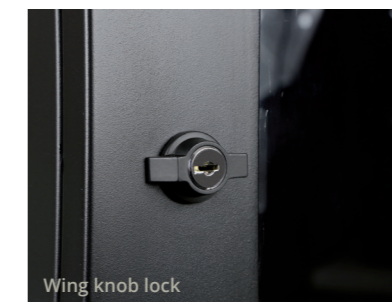
Specifications

ARTICLE	DIMENSIONS (H x W x D)	USABLE DEPTH	MAX LOAD	WEIGHT
WPR406	368 x 600 x 450 mm	410 mm	60 kg	18,5 kg
WPR409	501 x 600 x 450 mm	410 mm	60 kg	22,3 kg
WPR412	635 x 600 x 450 mm	410 mm	60 kg	25,7 kg
WPR606	368 x 600 x 600 mm	560 mm	60 kg	20,4 kg
WPR609	501 x 600 x 600 mm	560 mm	60 kg	26 kg
WPR612	635 x 600 x 600 mm	560 mm	60 kg	30 kg

- Reversible door position
- In depth adjustable 19" profiles
- Side panels with security key
- Cable entry on top, bottom and back
- Ventilation grid on top
- Punched square holes for use with snap-in cage nuts
- Static load up to 60 Kg



Removable side frames



Wing knob lock



Ventilation grid

SPR & WPR ACCESSORIES

SPR10CS



SPR10CS

The SPR10CS connects 2 racks together without nuts. Every rack is fitted with holes on top allowing for a quick and easy installation of the SPR10CS. This results in a good strong connection yet maintaining nice clean look. For use with SPR & WPR racks.

SPR10DC



DUST COVER BRUSH

The SPR10DC is a dust cover brush which is meant to be used for covering the cable inlets which are provided in the SPR and WPR racks. When the racks are installed in industrial environments, through time dust and dirt will enter the racks through all small gaps and openings. In the longer term, this can have a negative influence on the performance of the equipment which is installed in the racks.

SPRXXLR



SPR60LR - SPR80LR

A 19" L-rail made of 1,2 mm thick cold rolled steel with a black structural powder coating. The rail provides extra support when mounting heavy equipment and the mounting distance can be adjusted to your needs. For use with SPR series only. Comes in pairs.

Specifications

ARTICLE	DIMENSIONS (H x W x D)	WEIGHT
SPR60LR	35 x 67 x 350 mm	0,55 kg
SPR80LR	35 x 67 x 550 mm	0,63 kg

WPRXXLR



WPR45LR - WPR60LR

A 19" L-rail set made of 1,2 mm thick cold rolled steel with a black structural powder coating. The rail provides extra support when mounting heavy equipment and the mounting distance can be adjusted to your needs. For use with WPR and HPR series only.

Specifications

ARTICLE	DIMENSIONS (H x W x D)	WEIGHT
WPR45LR	38 x 45 x 227 mm	0,4 kg
WPR60LR	35 x 68 x 327 mm	0,6 kg

SPRXXPT



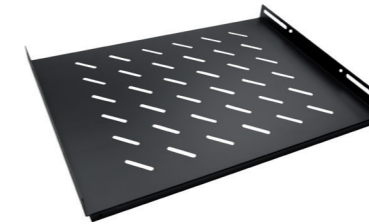
SPR60PT - SPR80PT

A 19" rack plinth made of steel with a plate thickness of 1,2 mm and provided with a black (RAL9004) structured powder coating. The plinth raises the rack off the floor allowing easy cable access.

Specifications

ARTICLE	DIMENSIONS (H x W x D)	WEIGHT
SPR60PT	80 x 600 x 600 mm	6 kg
SPR80PT	80 x 600 x 800 mm	7,6 kg

SPRXXFS WPRXXFS



SPR60FS - SPR80FS / WPR45FS - WPR60FS

A 19" fixed shelf made of steel with a plate thickness of 1,2 mm and provided with a black (RAL9004) structured powder coating. The shelf can be used to store equipment which doesn't contain a standard 19" mounting fixture. For use with SPR or WPR racks only.

Specifications

ARTICLE	DIMENSIONS (H x W x D)	WEIGHT
SPR60FS	15 x 470 x 350 mm	1,8 kg
SPR80FS	15 x 470 x 550 mm	2,8 kg
WPR45FS	15 x 490 x 350 mm	1,8 kg
WPR60FS	15 x 490 x 550 mm	2,8 kg

SPRXXRF



SPR60RF - SPR80RF

A 19" cooling roof fan unit made of steel with a plate thickness of 1,2 mm and provided with a black (RAL9004) structured powder coating which is used to improve the air circulation and help remove hot air from the rack. The fan runs at medium speed and needs to be fed with 240V AC at 50/60Hz. For use with SPR racks only.

Specifications

ARTICLE	DIMENSIONS (H x W x D)	WEIGHT	NOISE	POWER
SPR60RF	50 x 450 x 363 mm	2,3 kg	< 51 dB	2 x 20 W
SPR80RF	50 x 450 x 363 mm	3,5 kg	< 57 dB	4 x 20 W

SPRXXSS



SPR60SS - SPR80SS

A 19" sliding shelf made of steel with a plate thickness of 1,2 mm and provided with a black (RAL9004) structured powder coating. The shelf can be used to store equipment which doesn't contain a standard 19" mounting fixture or equipment that needs to be accessed frequently. The smooth sliding shelf provides easy access. For use with SPR racks only.

Specifications

ARTICLE	DIMENSIONS (H x W x D)	USABLE DEPTH	WEIGHT
SPR60SS	10 x 482 x 380 mm	350 mm	3,2 kg
SPR80SS	10 x 482 x 550 mm	530 mm	4,3 kg

WPR10RF



WPR10RF

The WPR10RF is a 120 mm sleeve bearing axial ventilation fan for installation in the top compartment of the WPR racks to improve the air circulation through the cabinet.

Specifications

SPEED	NOISE	LIFE TERM
2600 RPM	45 dB	30.000 HRS

BCO242



VERTICAL CABLE ORGANIZER

The BCO242 is a cable management system for vertical installation in 42 unit SPR series racks. The high capacity design with large number of openings allows simple and clean cable bundling and routing. Installation can be done on both front and rear side while access can be achieved in both directions. It is constructed using both steel and plastic components.

Dimensions : 1869 x 88,6 x 110 mm
Units : 42 units
For use with SPR642 and SPR842 racks.

PR SERIES

The PR series are professional standard 19" racks, available in a wide range of heights from 6 to 27 units. They are constructed of 1,5 mm cold rolled steel finished with a black (RAL9004) powder coating with a fine structure. They feature an open front side for direct access and removable rear panel for easy installation and cabling.



PR206/B
19" rack
6 units
500mm depth

PR209/B
19" rack
9 units
500mm depth

PR212/B
19" rack
12 units
500mm depth

PR218/B
19" rack
18 units
500mm depth

PR227/B
19" rack
27 units
500mm depth

Specifications

ARTICLE	DIMENSIONS (H x W x D)	USABLE DEPTH	WEIGHT
PR206/B	338 x 540 x 500 mm	475 mm	14,9 kg
PR209/B	471 x 540 x 500 mm	475 mm	17,7 kg
PR212/B	605 x 540 x 500 mm	475 mm	20,5 kg
PR218/B	872 x 540 x 500 mm	475 mm	26 kg
PR227/B	1272 x 540 x 500 mm	475 mm	34 kg

- Removable rear panel for easy installation & cabling
- Integrated ventilation grid and cable entry on rear panel
- Punched square holes for use with snap-in cage nuts
- Rubber feet on bottom

PR210WS



WHEEL SET FOR PR2XX RACKS
A set of 4 solid wheels for PR2xx racks.
Two wheels have a brake.
M8 / ø 50 x 20 mm



HPR SERIES

Professional 19" double section wall rack cabinet which complies to ANSI/EIA RS-310D, DIN41491 and IEC60297 standards. It ensures maximum installation, connectivity and maintenance ease. The solid construction made of an 1,5 mm thick steel frame and 1,2 mm thick plates is finished with a black (RAL9004) fine structured powder coating. It provides a stable and secure installation while the double section structure allows easy access to the rear side of the equipment. The tempered smokey glass front door is reversible and secured with a key lock which keeps the equipment accessible for authorized persons only.

HPR506



DOUBLE SECTION 19" RACK - 6 UNITS

The HPR506 is a professional 19" double section wall rack cabinet which ensures maximum installation, connectivity and maintenance ease storing up to 6 units of 19" equipment.

Specifications

DIMENSIONS (H x W x D)	USABLE DEPTH	MAX LOAD	WEIGHT
368 x 600 x 550 mm	410 mm	60 kg	22,2 kg

HPR509



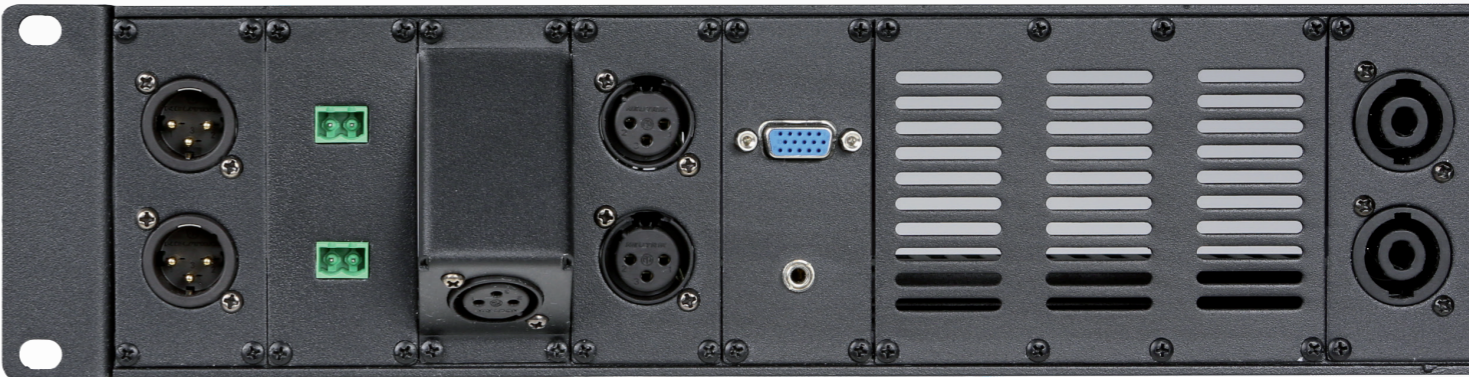
DOUBLE SECTION 19" RACK - 9 UNITS

The HPR509 is a professional 19" double section wall rack cabinet which ensures maximum installation, connectivity and maintenance ease storing up to 9 units of 19" equipment.

Specifications

DIMENSIONS (H x W x D)	USABLE DEPTH	MAX LOAD	WEIGHT
501 x 600 x 550 mm	410 mm	60 kg	26,8 kg





19" ACCESSORIES

CASY SERIES

The CASY system joins the Caymon product range as a flexible solution for a wide variety of applications in terms of system integration and connectivity. This system consists of an entire product range containing different base frames allowing an extensive range of optional modules can be installed. This results in a plug and play, solderless system offering flexible solutions in terms of connectivity, power distribution, internal rack supplies and many more.

The CASY system is built-up around a main-chassis, available in a range of sizes, mountings and depths. The range of modules goes from standard closed and vented blind panels to connection modules featuring audio connectors, video and data connectivities, power switches & sockets, volume controllers, strain reliefs and many more. The number of configurations is enormous and the number of applications where this system can offer tailored solutions is infinite.

CHASSIS

Front and back module mounting
Structured black powder coating
Aluminium extrusion



CASY001/B
CHASSIS 12 SPACE
2HE 19" mounting
120 mm depth



CASY002/B
CHASSIS 12 SPACE
2HE 19" mounting
270 mm depth



CASY003/B
CHASSIS 6 SPACE
Table mount
120 mm depth

STRAIN RELIEF

Structured black powder coating
1,5 mm steel
431,5 mm (W) x 82,1 mm (H)



CASY021/B
STRAIN RELIEF 12 SPACE
for use with CASY001/B and CASY002/B

1 SPACE ELEMENTS

Structured black powder coating
1,5 mm steel
35,5 mm (W) x 82,1 mm (H)



CASY101/B
Closed blind plate

CASY102/B
Vented blind plate

CASY103/B
Cover plate with D-size hole

CASY104/B
Angled cover plate with D-size hole

CASY105/B
Cover plate with 2 D-size holes

CASY121/B 
Cover plate with Neutrik XLR female to 3-pin terminal block

CASY122/B 
Cover plate with Neutrik XLR male to 3-pin terminal block

CASY123/B 
Angled cover plate with Neutrik XLR female to 3-pin terminal block

CASY124/B 
Angled cover plate with Neutrik XLR male to 3-pin terminal block

CASY125/B 
Cover plate with 2 x Neutrik XLR female to 3-pin terminal block

CASY126/B 
Cover plate with 2 x Neutrik XLR male to 3-pin terminal block

CASY131/B
Cover plate with 2 x RCA gender

CASY132/B
Cover plate with 2 x RCA to 3-pin terminal block

CASY135/B
Cover plate with 3.5 mm Jack gender

CASY136/B
Cover plate with 3.5 mm Jack to 3-pin terminal block

CASY138/B
Cover plate with 2 x 3-pin terminal block to 3-pin terminal block line level

CASY141/B 
Cover plate with Neutrik Speakon to 4-pin terminal block

CASY142/B 
Cover plate with 2 x Neutrik Speakon to 4-pin terminal block

CASY143/B 
Angled cover plate with Neutrik Speakon to 4-pin terminal block

CASY148/B
Cover plate with 2 x 2-pin terminal block to 2-pin terminal block speaker level


CASY151/B
Cover plate with VGA and 3,5 mm Jack gender

CASY152/B
Cover plate with HDMI and 3,5 mm Jack gender

CASY161/B
Cover plate with USB 2.0 A gender

CASY162/B
Cover plate with USB 2.0 A to 4-pin terminal block

CASY167/B 
Cover plate with Neutrik Ethercon to RJ45

CASY168/B 
Cover plate with 2 x Neutrik Ethercon to RJ45

CASY181/B
Cover plate with Euro power male to GST18 female

CASY182/B
Cover plate with Euro power female to GST18 male

CASY191/B
Cover plate with stereo galvanic isolator (shielded)

CASY192/B
Cover plate with stereo galvanic isolator (super shielded)

2 SPACE ELEMENTS

Structured black powder coating
1,5 mm steel
71,5 mm (W) x 82,1 mm (H)



CASY201/B
Closed blind plate

CASY202/B
Vented blind plate

CASY203/B
Cover plate with 4 D-Size holes

CASY282/B
Cover plate with 2 x Euro power female to GST18 male

CASY285F/B
Cover plate with French schuko female to GST18 male (IP44 protection)

CASY285G/B
Cover plate with German schuko female to GST18 male (IP44 protection)

CASY295-30/B
Cover plate with 100V / 30W volume controller

CASY295-60/B
Cover plate with 100V / 60W volume controller

CASY295-100/B
Cover plate with 100V / 100W volume controller

3 SPACE ELEMENTS

Structured black powder coating
1,5 mm steel
107,5 mm (W) x 82,1 mm (H)



CASY301/B
Closed blind plate

CASY302/B
Vented blind plate

4 SPACE ELEMENTS

Structured black powder coating
1,5 mm steel
143,5 mm (W) x 82,1 mm (H)



CASY401/B
Closed blind plate

CASY402/B
Vented blind plate

BLIND PLATES

The range of blind panels includes several models whereof each model is available in different versions in terms of dimensions and/or assembly possibilities. All blind plates are made of 1,5 mm thick cold rolled steel with a U-shaped structure which provides improved strength. They are all finished with a black (RAL9004°) powder coating with fine structured finish which ensures an improved scratch resistance.

BLIND PLATES

19" blind cover made of steel with a black structural powder coating. With a thickness of 1,5 mm. Available in 0.33, 0.5, 1, 2, 3, 4, 5 and 6 units.



BSF003

19" BLIND PLATE STEEL - 0.33 UNIT
Dimensions (H x W x D) : 14,1 x 483 x 10 mm
Weight : 0,16 kg

BSF005

19" BLIND PLATE STEEL - 0.5 UNIT
Dimensions (H x W x D) : 21,5 x 483 x 10 mm
Weight : 0,20 kg

BSF01

19" BLIND PLATE STEEL - 1 UNIT
Dimensions (H x W x D) : 43,7 x 483 x 10 mm
Weight : 0,28 kg

BSF02

19" BLIND PLATE STEEL - 2 UNITS
Dimensions (H x W x D) : 88,1 x 483 x 10 mm
Weight : 0,46 kg

BSF03

19" BLIND PLATE STEEL - 3 UNITS
Dimensions (H x W x D) : 132,5 x 483 x 10 mm
Weight : 0,70 kg

BSF04

19" BLIND PLATE STEEL - 4 UNITS
Dimensions (H x W x D) : 177 x 483 x 10 mm
Weight : 0,82 kg

BSF05

19" BLIND PLATE STEEL - 5 UNITS
Dimensions (H x W x D) : 221,5 x 483 x 10 mm
Weight : 1,10 kg

BSF06

19" BLIND PLATE STEEL - 6 UNITS
Dimensions (H x W x D) : 265,9 x 483 x 10 mm
Weight : 1,30 kg

VENTILATED BLIND PLATES

19" blind cover made of steel with a black structural powder coating. With a thickness of 1,5 mm and ventilation openings. Available in 1, 2, 3, 4, 5 and 6 units.



BSV01

19" VENTILATED BLIND PLATE STEEL - 1 UNIT
Dimensions (H x W x D) : 43,7 x 483 x 10 mm
Weight : 0,22 kg

BSV02

19" VENTILATED BLIND PLATE STEEL - 2 UNITS
Dimensions (H x W x D) : 88,1 x 483 x 10 mm
Weight : 0,4 kg

BSV03

19" VENTILATED BLIND PLATE STEEL - 3 UNITS
Dimensions (H x W x D) : 132,5 x 483 x 10 mm
Weight : 0,56 kg

BSV04

19" VENTILATED BLIND PLATE STEEL - 4 UNITS
Dimensions (H x W x D) : 177 x 483 x 10 mm
Weight : 0,7 kg

BSV05

19" VENTILATED BLIND PLATE STEEL - 5 UNITS
Dimensions (H x W x D) : 221,5 x 483 x 10 mm
Weight : 0,88 kg

BSV06

19" VENTILATED BLIND PLATE STEEL - 6 UNITS
Dimensions (H x W x D) : 265,9 x 483 x 10 mm
Weight : 0,96 kg

BLIND PLATES WITH BRUSH

19" blind panels with brush strip which can be installed in any 19" enclosure providing an inlet through which any cable can pass without having any openings or holes in the enclosure. The brush will blend nicely around the passing cable, preventing any unwanted dust or dirt from entering the cabinet.



BSB01

19" BLIND PLATE WITH BRUSH - 1 UNIT
 Dimensions (H x W x D) : 43,7 x 483 x 10 mm
 Weight : 0,196 kg



BSB02

19" BLIND PLATE WITH BRUSH - 2 UNITS
 Dimensions (H x W x D) : 88,1 x 483 x 10 mm
 Weight : 0,338 kg

CABLE ORGANIZER

BCO101

HORIZONTAL CABLE ORGANIZER

The BCO101 horizontal cable management system can be installed to any 19" rack enclosure occupying one single rackspace. It organizes small to large cable bundles on any device or patch panel, keeping a clean and beautiful overview on the wiring. Access can be achieved in both directions and is constructed using ABS materials.



Dimensions (H x W x D) : 482 x 44 x 65,5 mm
 Weight : 0,23 kg

SCREWS & CAGE NUTS

KM500 + KM600 + KM600A

NUT

Cage nuts for thin rack profile
 Cage nuts for 1,60 mm rack profile
 KM500 : M5 cage nut for 1,60 mm rack profile
 KM600 : M6 cage nut for 1,60 mm rack profile
 KM600A : M6 cage nut for 3,50 mm rack profile



KS500 + KS600

BOLTS

KS500 : M5 x 14 bolt for KM500
 KS600 : M6 x 14 bolt for KM600/KM600A



RACK PLATES

BP106

19" PANEL
 19" blind plate, 1 unit, 6 D-size holes
 Dimensions (H x W x D) : 43,7 x 483 x 10 mm
 Weight : 0,26 kg



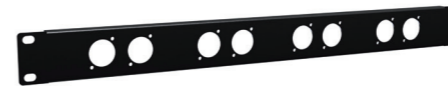
BP106T

19" PANEL
 19" blind plate, 1 unit, 6 D-size holes and tension relief
 Dimensions (H x W x D) : 43,7 x 483 x 83 mm
 Weight : 0,66 kg



BP108

19" PANEL
 19" blind plate, 1 unit, 8 D-size holes
 Dimensions (H x W x D) : 43,7 x 483 x 10 mm
 Weight : 0,28 kg



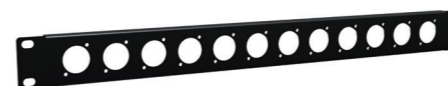
BP108T

19" PANEL
 19" blind plate, 1 unit, 8 D-size holes and tension relief
 Dimensions (H x W x D) : 43,7 x 483 x 83 mm
 Weight : 0,65 kg



BP112

19" PANEL
 19" blind plate, 1 unit, 12 D-size holes
 Dimensions (H x W x D) : 43,7 x 483 x 10 mm
 Weight : 0,30 kg



BP112T

19" PANEL
 19" blind plate, 1 unit, 12 D-size holes and tension relief
 Dimensions (H x W x D) : 43,7 x 483 x 83 mm
 Weight : 0,63 kg



BSG01

19" PANEL
 19" grill security panel, 1 unit
 Dimensions (H x W x D) : 43,7 x 483 x 25 mm
 Weight : 0,28 kg



BSG02

19" PANEL
 19" grill security panel, 2 units
 Dimensions (H x W x D) : 88,1 x 483 x 25 mm
 Weight : 0,39 kg



POWER DISTRIBUTION

PSR108E + PSR108ES + PSR118ES

19" POWER DISTRIBUTION UNIT C13 SOCKET

Dimensions (H x W x D) : 45,2 x 480 x 44,9 mm
Weight : 0,75 kg



PSR108E/B : 8 x IEC C13 socket

PSR108ES/B : with front switch & switch cover

PSR118ES/B : with rear switch



PSR108F + PSR108FS + PSR118FS

19" POWER DISTRIBUTION UNIT FRENCH SOCKET

Dimensions (H x W x D) : 45,2 x 480 x 44,9 mm
Weight : 0,82 kg



PSR108F/B : 8 x French socket

PSR108FS/B : with front switch & switch cover

PSR118FS/B : with rear switch



PSR108G + PSR108GS + PSR118GS

19" POWER DISTRIBUTION UNIT GERMAN SOCKET

Dimensions (H x W x D) : 45,2 x 480 x 44,9 mm
Weight : 0,82 kg



PSR108G/B : 8 x German socket

PSR108GS/B : with front switch & switch cover

PSR118GS/B : with rear switch



PSR107UKS

19" POWER DISTRIBUTION UNIT UK SOCKET

Dimensions (H x W x D) : 45,2 x 480 x 44,9 mm
Weight : 0,82 kg



PSR107UKS/B : with front switch & switch cover



RACK SHELVES

The IS series are 19" fixed shelves which are constructed of cold rolled steel with a plate thickness of 1,5 mm. They are available in three models for 1 unit, 2 units and 3 units rack mounting with each of them a usable depth of 325 mm. The special cutout structure allows easy and effective rack assembly for any device which is not standard fitted with 19" mounting ears, including wire fixation. They are all finished with a black (RAL9004) powder coating with fine structured finish which ensures an improved scratch resistance.

IS110



19" STANDARD SHELF - 1 UNIT

For non rack mountable appliances
Dimensions (H x W x D) : 43,7 x 483 x 331,5 mm
Usable depth : 325 mm
Weight : 1,99 kg

IS210



19" STANDARD SHELF - 2 UNITS

For non rack mountable appliances
Dimensions (H x W x D) : 88,1 x 483 x 331,5 mm
Usable depth : 325 mm
Weight : 2,36 kg

IS310



19" STANDARD SHELF - 3 UNITS

For non rack mountable appliances
Dimensions (H x W x D) : 132,5 x 483 x 331,5 mm
Usable depth : 325 mm
Weight : 2,73 kg

DRAWERS

The range of 19" rack drawers consists of three sizes with differences in unit height. These rack drawers can be used for storage of any belongings related to the rack mounted equipment, such as cables, microphones, wireless transmitters, headsets, remote controls, instruction manuals, etc. They are constructed of 1,2 mm thick cold rolled steel which is finished in a black (RAL9004) powder coating with fine structured finish which ensures an improved scratch resistance.

RD110L



DRAWER - 1 UNIT

19" drawer with lock, 1 unit
 Dimensions (H x W x D) : 43,7 x 483 x 375 mm
 Inside dimensions (H x W x D) : 38,5 x 399 x 350 mm
 Weight : 4,50 kg



with wing-knob lock

RD210L



DRAWER - 2 UNITS

19" drawer with lock, 2 units
 Dimensions (H x W x D) : 88 x 483 x 375 mm
 Inside dimensions (H x W x D) : 83,5 x 399 x 350 mm
 Weight : 6,14 kg



RD210 drawer without lock

RD310L



DRAWER - 3 UNITS

19" drawer with lock, 3 units
 Dimensions (H x W x D) : 132,5 x 483 x 375 mm
 Inside dimensions (H x W x D) : 128 x 399 x 350 mm
 Weight : 7,31 kg



RD310 drawer without lock

RD410L

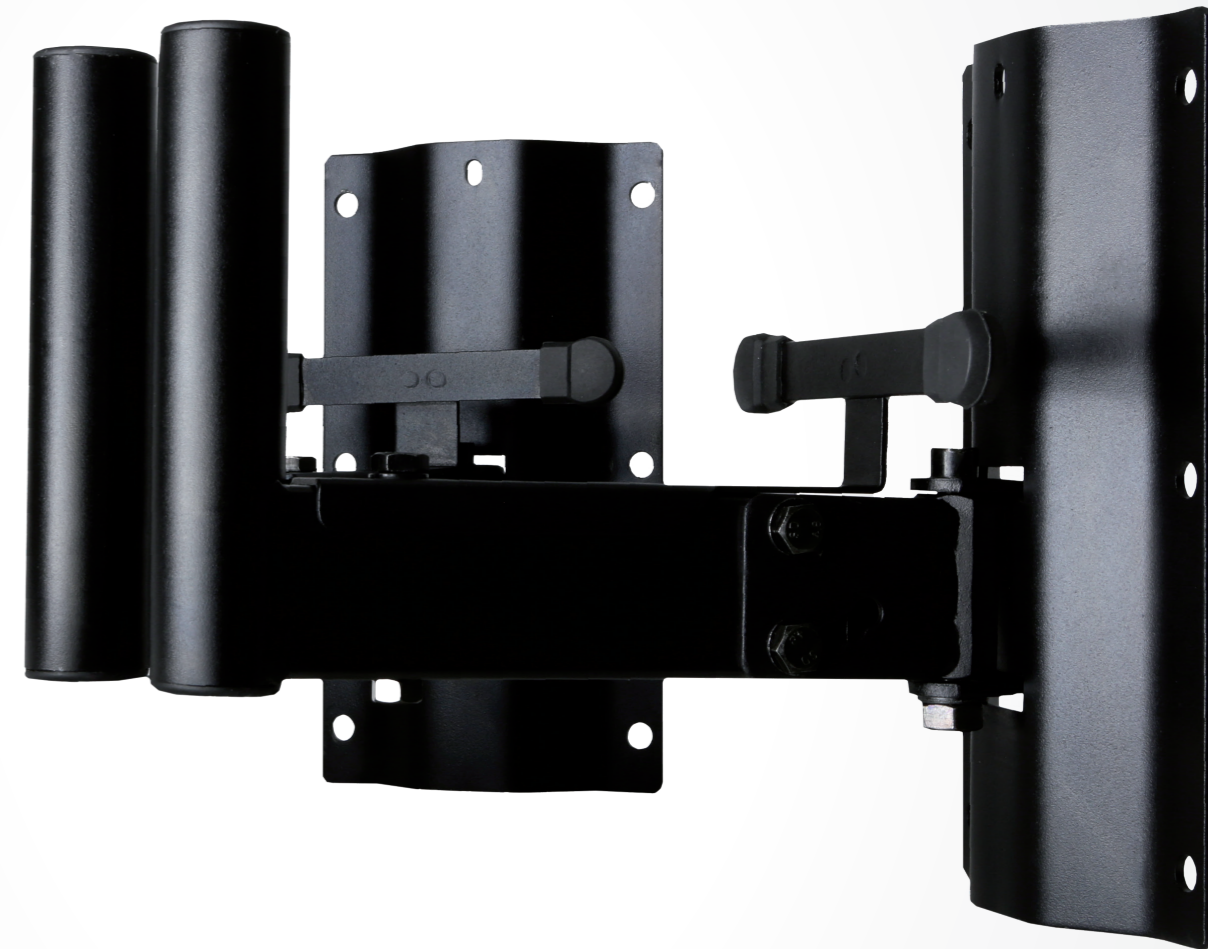


DRAWER - 4 UNITS

19" drawer with lock, 4 units
 Dimensions (H x W x D) : 177 x 483 x 375 mm
 Inside dimensions (H x W x D) : 172,5 x 399 x 350 mm
 Weight : 8,48 kg



RD410 drawer without lock



ACCESSORIES

The Caymon loudspeaker brackets are available in different models, colors and sizes, and will help you to mount your speaker on any wall or ceiling in a simple and secure way. They are constructed of strong materials and their esthetic design makes them fit perfectly in almost any environment.

WLB05

PLASTIC SPEAKER WALL BRACKET

Hard plastic wall bracket.
Packed in pairs.
Height : 88 mm
Width : 62 mm
Depth : 40 mm
Color : Black
Weight : 0,1 kg
Max load : 5 kg



WLB25

METAL SPEAKER WALL BRACKET

Height : 250 mm
Width : 140 mm
Depth : 267,5 mm
Tube diameter : 35 mm
Color : Black (/B) or white (/W)
Weight : 1,96 kg
Max load : 40 kg



WLB35

METAL SPEAKER WALL BRACKET

Height : 250 mm
Width : 140 mm
Depth : 367,5 mm
Tube diameter : 35 mm
Color : Black (/B) or white (/W)
Weight : 2,12 kg
Max load : 40 kg



CHB196

BUILT-IN HEAD BASE FOR SPEAKER

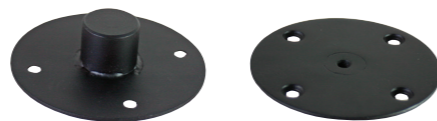
Aluminium flange adaptor.
35 mm to be built in speakers, for use with speakerstands with 35 mm tube diameter.
Height : 81 mm
Diameter : 110 mm
Built-in depth : 75 mm
Weight : 0,15 kg
Color : Black (/B) or white (/W)



SHB110

SPEAKER SCREW FLANGE

For speaker stands with M10 screw connection.
Inside thread : 10 mm / M10
Diameter : 110 mm
Built-in depth : 28 mm
Weight : 0,38 kg



NOTES



INDEX

BCO101	18	CASY121/B	15	CASY302/B	16	RD410	22
BCO242	9	CASY122/B	15	CASY401/B	16	RD410L	22
BP106	19	CASY123/B	15	CASY402/B	16	SHB110	24
BP106T	19	CASY124/B	15	CHB196	24	SPR10CS	8
BP108	19	CASY125/B	15	HPR506	11	SPR10DC	8
BP108T	19	CASY126/B	15	HPR509	11	SPR18GL	6
BP112	19	CASY131/B	15	IS110	21	SPR27GL	6
BP112T	19	CASY132/B	15	IS210	21	SPR32GL	6
BSB01	18	CASY135/B	15	IS310	21	SPR42GL	6
BSB02	18	CASY136/B	15	KM500	18	SPR618	6
BSF01	17	CASY138/B	15	KM600	18	SPR627	6
BSF02	17	CASY141/B	15	KM600A	18	SPR632	6
BSF003	17	CASY142/B	15	KS500	18	SPR642	6
BSF03	17	CASY143/B	15	KS600	18	SPR832	6
BSF04	17	CASY148/B	15	PR206/B	10	SPR842	6
BSF005	17	CASY151/B	15	PR209/B	10	SPRXXFS	9
BSF05	17	CASY152/B	15	PR210WS	10	SPRXXLR	8
BSF06	17	CASY161/B	15	PR212/B	10	SPRXXPT	8
BSG01	19	CASY162/B	15	PR218/B	10	SPRXXRF	9
BSG02	19	CASY167/B	15	PR227/B	10	SPRXXSS	9
BSV01	17	CASY168/B	15	PSR107UKS	20	WLB05	24
BSV02	17	CASY181/B	15	PSR108E	20	WLB25	24
BSV03	17	CASY182/B	15	PSR108ES	20	WLB35	24
BSV04	17	CASY191/B	15	PSR108F	20	WPR10RF	9
BSV05	17	CASY192/B	15	PSR108FS	20	WPR406	7
BSV06	17	CASY201/B	16	PSR108G	20	WPR409	7
CASY001/B	14	CASY202/B	16	PSR108GS	20	WPR412	7
CASY002/B	14	CASY203/B	16	PSR118ES	20	WPR606	7
CASY003/B	14	CASY282/B	16	PSR118FS	20	WPR609	7
CASY021/B	14	CASY285F/B	16	PSR118GS	20	WPR612	7
CASY101/B	15	CASY285G/B	16	RD110L	22	WPRXXFS	9
CASY102/B	15	CASY295-30/B	16	RD210	22	WPRXXLR	8
CASY103/B	15	CASY295-60/B	16	RD210L	22		
CASY104/B	15	CASY295-100/B	16	RD310	22		
CASY105/B	15	CASY301/B	16	RD310L	22		



www.caymon.eu
info@caymon.eu