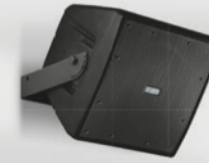
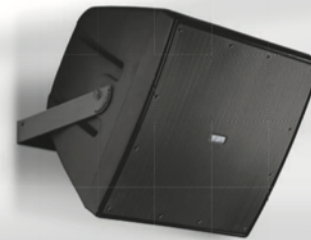
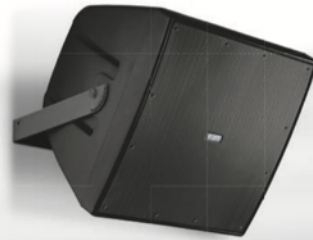


Shadow

Constant Curvature Line Array
Point Source

Shadow

Constant Curvature Line Array
Point Source



Shadow 142L

14" LINE ARRAY SPEAKER SYSTEM
600W / 8ohm - 132dB SPL

- **14" woofer with a 3" coil**
- HF section is a constant directivity horn loaded to **2x1.4"** driver with a **2.5"** coil for smooth, wide dispersion
- Sturdy molded polyethylene curved enclosure, full UV protection
- Water-stop grill with 3 layers of protection
- **IP55 weather resistant**
- **80° x 15°** coverage
- **7.5° or 15°** adjustable angle
- EN54-24 certified



SW-F 142 Code 36350
Flying bar for rigging
SHADOW 142 L

Shadow 112HC

HIGH PERFORMANCE 12" COAX HORN LOADED, MEDIUM/LONG THROW
400W/8ohm - 129dB SPL

- **12" woofer with 2.5" coil horn loaded**
- **Constant directivity horn 1" HF driver with 1.7" coil**
- **An optional transformer model, SHADOW 112HCT**, is also available with **200W/100W power tapping** selection
- 80°x50° coverage
- 4 wires cable to select the desired power tapping
- Sturdy molded polyethylene curved enclosure
- Water-stop grill with 3 layers of protection
- Steel U bracket and other included hardware accessories
- **IP55 weather resistant**
- EN54-24 certified

Shadow 112CT

MULTIPURPOSE HIGH PERFORMANCE 12" COAX
400W/8ohm - 126dB SPL

- **12" coaxial woofer with 2.5" coil and 1" HF driver with 1.7" coil on conical 80° horn**
- **100V line transformer** with selectable **200W/100W power tapping**
- Sturdy molded polyethylene curved enclosure
- 4 wires cable to select the desired power tapping
- Water-stop grill with 3 layers of protection
- **IP55 weather resistant**
- EN54-24 certified

Shadow 108CT

MULTIPURPOSE 8" COAX
300W/8ohm - 121dB SPL

- **8" coaxial woofer with 2" coil and 1" HF driver with 1.4" coil on conical 90° horn**
- **100V line transformer** with selectable **100W/50W power tapping**
- Sturdy molded polyethylene curved enclosure
- Steel U bracket and other included hardware accessories
- 4 wires cable to select the desired power tapping
- Water-stop grill with 3 layers of protection
- **IP55 weather resistant**
- EN54-24 certified

Shadow 105T

MULTIPURPOSE 5" FULL RANGE
100W/8ohm - 110dB SPL

- **2 way configuration with an high power 5" cone and 1" dome for high frequencies**
- **100V line transformer** with selectable **50W/25W power tapping**
- 100°x70° coverage
- Die-cast aluminum wall bracket with ball/socket for multi angle adjustment capability, with a security cable
- 4 wires cable to select the desired power tapping
- Water-stop grill with 3 layers of protection
- **IP55 weather resistant**
- EN54-24 certified

Shadow

Constant Curvature Line Array
Point Source



SHADOW		142L	112HC	112CT	108CT	105T
Code		41881	41810	41809	41808	40646
Configuration	way	2	2	2	2	2
Recommended amplifier (Biamp LF/HF)	W rms	600	400	400	300	100
System Long term power (Biamp LF/HF)	W	300	200	200	150	50
System Short term power IEC 268-5 (Biamp LF/HF)	W	1200	800	800	600	200
Transformer	V/V	/	100 / 200 optional	100 / 200	100 / 100	100/50
Nominal impedance (Biamp LF / HF)	Ohm	8 (8 / 8 optional)	8	8	8	8
Frequency response	@-6dB	63Hz - 20KHz	98Hz - 19KHz	68Hz - 20KHz	94Hz - 20KHz	100Hz - 18KHz
Low frequency woofer	inch	14 - 3 coil	12 - 2.5 coil	12 - 2.5 coil	8 - 2 coil	5 - 1 coil
High frequency driver	inch	2 x 1.4 - 2.5 coil	1 - 1.7 coil	1 - 1.7 coil	1 - 1.4 coil	1 - dome
Sensitivity (@1W/1m) (Biamp LF/HF)	dB	102	101	97.5	94	87.5
Maximum SPL cont/peak	dB	126 / 132	123 / 129	120 / 126	115 / 121	104 / 110
Dispersion	H x V	80° x 15°	80° x 50°	80° conical	90° conical	100° x 70°
Crossover frequency	kHz	1.2 (opt Bi-Amp)	1.6	1.6	1.8	3
Recommended HP filter		40Hz - 24dboct	80Hz - 24dboct	50Hz - 24dboct	70Hz - 24dboct	80Hz - 24dboct
Input connectors		2 x Amphenol LTW 4pole	4 wire cable	4 wire cable	4 wire cable	7 wire cable
Net dimensions (WxDxD)	mm inch	615x430x415 24.41x16.92x16.33	430x430x400 16.92x16.92x15.74	430x430x400 16.92x16.92x15.74	285x285x250 11.22x11.22x9.84	168x222x200 6.61x8.74x7.87
Net weight	kg/lb	38 / 83.7	21 / 46.3	15 / 33	7 / 15.4	3.5 / 7.7
Transport dimensions(WxDxD)	mm inch	715x530x515 28.14x20.86x20.27	530x530x500 20.86x20.86x19.68	530x530x500 20.86x20.86x19.68	365x365x330 14.37x14.37x12.99	250x300x280 9.84x11.81x11.02
Transport weight	kg/lb	40 / 88.2	23/50,7	17/37	9/19,8	4,5/9,9

SECURITY AND EMERGENCY SYSTEM **EN 54**

VAIE

FBT UNVEILS VAIE 7500 VOICE EVACUATION SYSTEMS



The **new VAIE 7500** range from FBT will make its official debut at Frankfurt Pro Light + Sound 2018, offering wall-mountable mission critical voice evacuation system for up to six zones. Comprising three models, the range offers compliance with **EN 54-16:2008 / EN 54-4 standards**, while up to six systems can be connected to serve a maximum of 36 zones – each with its own audio source. The connection will be with a double redundant link. Aimed at installations which require emergency facilities that simply won't fail, the **VAIE 7500** combines FBT's characteristically rugged but user-friendly design and software support for up to eight languages.

Each zone is driven by its own individual amplifier with a maximum limit of **250W** per single zone and an overall rated output of **500W** – freely distributable among the zones. The VAIE 7502 can divide 500W between two zones, while the VAIE 7504 will split 500W between up to four zones, and the VAIE 7506 will split 500W across a maximum of six zones.

Also on-board are up to seven controlled inputs for connecting to a centralised fire-fighting system, enabling the recall of up to eight pre-recorded messages (two emergency messages for alert and evacuation, and six that can be classified as emergency, evacuation or broadcast). A single music input is also available for sound sources, plus three configurable relays and an auxiliary configurable input. Users can play MP3 files through a SD Card or an external USB device.

A handheld fireman's microphone is integrated into the design, while each VAIE system can be set as the main broadcasting microphone station and up to 16 microphone stations can be connected in total (via MBT 1106 and/or MBT 1112). Front-panel control is via a backlit 4.3" touchscreen, enabling the setting of alerts and evacuation zones as well as volume levels and system configuration settings, according to different authorization levels.

Other features include a protected local button (with dedicated LED) for placing the system into an emergency state, plus a dedicated button for resetting an active alarm signal. Up to four FMD 2001 and/or FMD 2012 remote emergency units can be connected (or two TSC6000-EN touchscreens), while an on-board events log ensures fully transparent operation.