

NAVRC-100 Wall-Mounted Remote Control Panel

Sabine Navigators can be controlled from the front panel, the remote control software, or the NAVRC-100 Remote Control Wall Panel. These attractive panels mount in standard 2-gang wall-boxes, and they provide control over several Navigator functions. Each panel has a set of control buttons and a backlit LCD for displaying menus and control parameters.

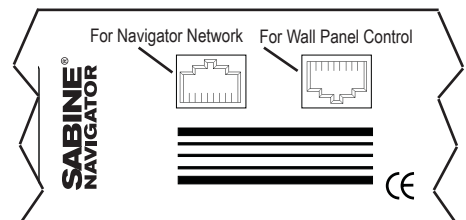
Programming the wall panels is done using the Navigator Wall Panel Setup software. This PC-software allows you to create custom menus for each Navigator function, and allows for limiting the accessible range of each function. For example, you can allow for only small changes in gain at the wall panel.

In order to use the wall panel to control a Navigator you must have an R-series unit -- that means choosing the Wall Panel-Ready option after selecting your base model Navigator (for example, NAV4802-R). This option adds an RJ-45 connector on the back panel. The one on the left (facing the back of the unit) is the Ethernet connector (which you will see depending on which Navigator you have chosen) and the one on the right is the wall panel connector. Standard CAT-5 Ethernet cable with RJ-45 connectors is used to connect the wall panel controller to this jack. The Navigator supplies power to the wall panel controller via the Ethernet cable. The maximum cable length from one wall panel to a Navigator is 200 feet.

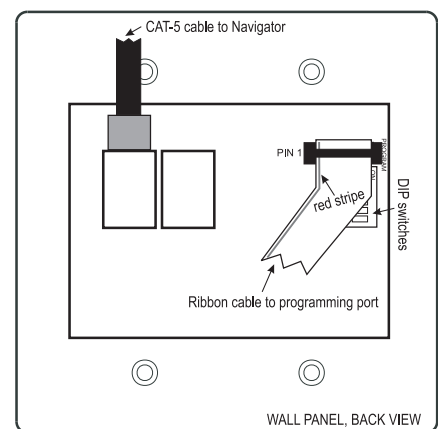
Your application may require the ability to control one or more Navigators from one or more Wall Panels. This allows you to control Navigators from multiple remote locations throughout the installation. Because there is only one Wall Panel connector on each Navigator, you can connect either multiple Navigators or Wall Panels by daisy-chaining the Wall Panels. You can connect up to two Navigators to one Wall Panel, or up to 32 Wall Panels to one Navigator. You can combine these scenarios, too. For example, you might have two Wall Panels, each with the ability to control two Navigators.



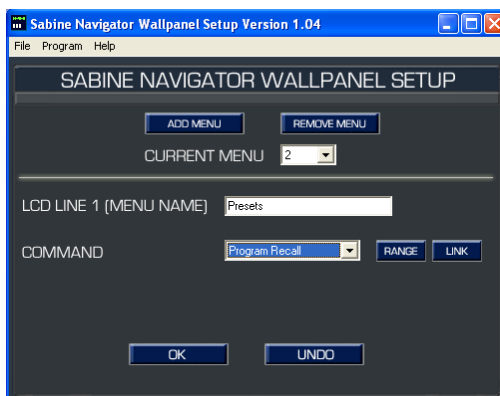
NAVRC-100 Wall Panel Remote



Back panel section of Navigator, showing connector for CAT5 to NAVRC-100



Rear View of NAVRC-100, showing CAT5 connection and programming connection



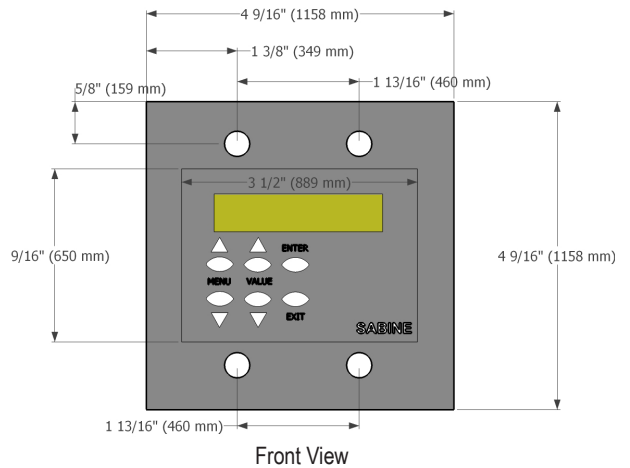
Navigator Wall Panel Setup software

NAVRC-100 Wall-Mounted Remote Control Panel

Specifications

NAVRC-100
 Programmable controller for
 Navigator NAV4802-RC or NAV8802-RC

- Dimensions: 4.58" wide x 4.58" high x 1.36" deep
- Minimum hole for mounting: 3.5" wide x 2.6" high
- Fits in standard 2-gang wall box
- Power is supplied by the connected Navigator
- Included in the box:
 - Complete controller mounted on cover plate, ready to install
 - Programming port and ribbon cable
- Not included but required for installation:
 - CAT5 Ethernet cable - run from Navigator to NAVRC-100
 - Standard 9-pin RS232 serial cable (for setup only)
 - Standard 2-gang wall box and mounting screws
 - PC computer with Navigator Wall Panel Setup software installed and RS232 serial connection (for setup only)



Connections: NAVRC-100

- To Navigator: 2 RJ-45 connectors for CAT5 cable
- To Programming Port: Ribbon Connector

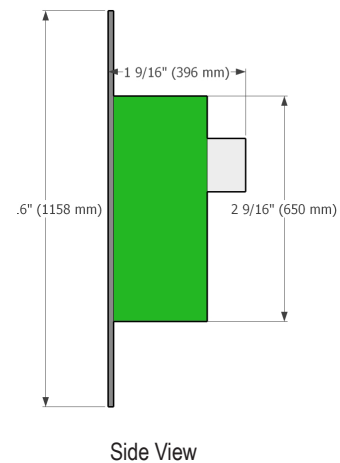
Connections: Programming Port

- To PC: DB9 RS232 connector
- To NAVRC-100: Ribbon Connector

- Maximum number of Wall Panels per Navigator: 32
- Maximum number of Navigators per Wall Panel: 2
- Maximum CAT5 cable length per Wall Panel/Navigator setup: 200 feet

Available Control Parameters, selectable for input or output:

- Signal Mute
- Signal Level
- Signal Polarity
- Signal Delay
- EQ Frequency
- EQ Level
- Mixer
- Program Recall (global)
- Front Panel Controls
 - Menu, Value, Enter, Exit
- Back Panel Controls
 - Dipswitches, for identifying each Wall Panel



SPECIFICATIONS SUBJECT TO CHANGE WITHOUT NOTICE
 © 2007 Sabine, Inc.



Sabine, Inc.
 13301 NW US Highway 441
 Alachua, Florida 32615-8544 USA
 Phone: (386) 418-2000 • Fax: (386) 418-2001
 www.Sabine.com • sabine@sabine.com