

BE **D1** TO COME TO TOWN.



BE **D1** TO BURN IT DOWN.

evolution wireless **D1**

SENNHEISER
The Pursuit of Perfect Sound

Introduction



Wow. What a performance. They're elated. No, blown away. You're tingling all over. You simply went out there and nailed it. You did your thing, hit a nerve and left no one in doubt.

Was it luck? Coincidence? No. It never would come down to that. You put your faith in your own ability. When you took a hit, you got right back up there. You staked it all on just one thing and weren't left disappointed.

This is a bit like how we developed **evolution wireless D1**: Months in the rehearsal room, that is, our labs. It took a long time before we felt it was the way we wanted it—a feeling you may well be familiar with. We worked at it, binned stuff, argued over it and started all over again. Only when we got that tingling feeling, did we let **evolution wireless D1** up onto the stage. And we are

proud of everything you create with it. It was for this very reason that we created the most modern, smartest digital wireless system available anywhere. We are giving you a slice of our passion for perfect sound. Just as you give your audience a piece of yourself. We know just what that's like. Because we understand the feeling of being out there, center-stage. Be **D1** to enjoy your session.



The Vocal Sets

06

The Instrument Set

10



The Headmic Set

12



The Lavalier Set

14

Know How

16

Accessories

19

Introducing evolution wireless D1

A REVOLUTIONARY SYSTEM



Be D1 with a **Unique Link**

Wireless links are a question of trust. What may be acceptable with a cell phone, may never occur on the stage. Nothing may be allowed to hinder your signal, especially in the 2.4 GHz bandwidth, so beloved the world over—because it's license-free. That's why we chose to work with not just one radio technology, but a combination of five. The result: **Wireless Link Protection. evolution wireless D1** delivers stronger, faster, smarter.



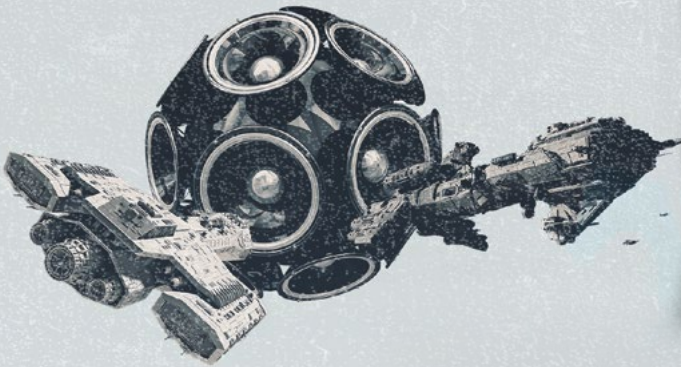
Be D1 to Sound **Authentic**

In reality, your voice, your performance, your music contains more data than a wireless link can maintain. So the quality of your sound not only comes down to the microphone or the bodypack—it's a question of the software, the algorithms, the codec too. That's why we look to the very best brand quality available on the market: the aptX Live[®] codec—with its extreme wide dynamics and low latency the preferred choice amongst sound professionals.

evolution wireless D1 is a next-generation digital wireless system. Simpler. Reliable at last. Your thing is being a singer, songwriter, instrumentalist or presenter ... Whatever, now you can rely on technology previously only accessible to professionals.

Be D1 to Last Forever

evolution wireless D1 is designed as a secure investment into your future. Its next generation technology comes in a stage-proof metal housing; additional audio effects like a megaphone, phone, de-esser and a 7-band graphic equalizer are also available. **evolution wireless D1** grows with your needs: you can use up to 15 channels simultaneously via channel boosting, given optimal conditions. The last thing you need is a power failure, so the transmitter and receiver permanently display the remaining battery life.



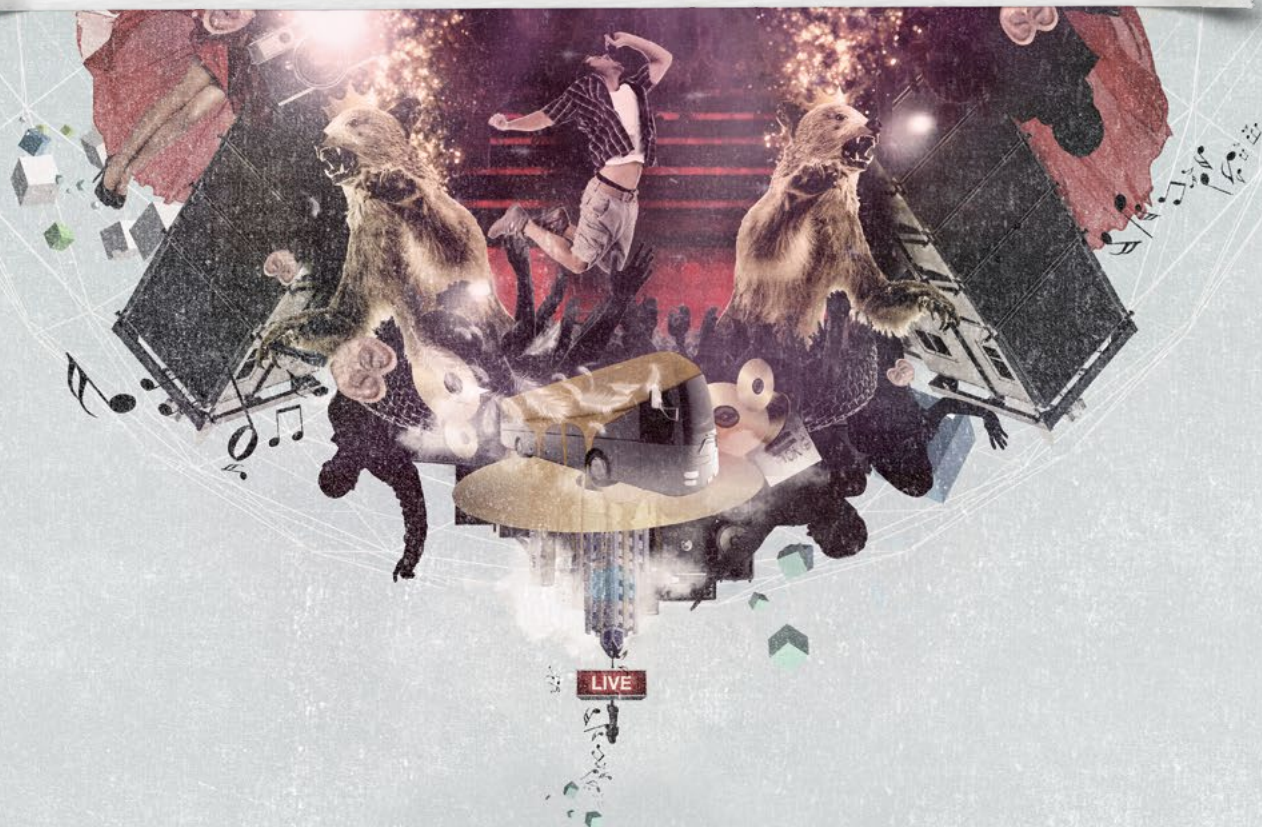
Be D1 to Take it Easy

Concentrate on doing your thing, not on the technology. **evolution wireless D1** simply adapts by itself, even if you're working with multiple radio links. Just press 'Pair' and get on with it. The system will even secure the most vulnerable part of the configuration: the right sensitivity. The system automatically adjusts the mic sensitivity to the current sound source. You don't need to worry. And if you ever want to take control: every system can be controlled with Android and iOS apps using the Media Control Protocol.

The Vocal Sets



YOU WORKED SO HARD FOR THIS.
BE **D1** TO CATCH THEM ALL.



Raise Your Voice

evolution wireless D1 feels like a scepter in your hand. It gives you complete control over your performance. You sound exactly like you want to. Your link is bulletproof. And everything outside of the actual singing is taken care of automatically.



evolution wireless D1 carries the finest nuances of your vocal delivery, because we have combined stage-tested evolution capsules with the most advanced digital radio technology available to date.

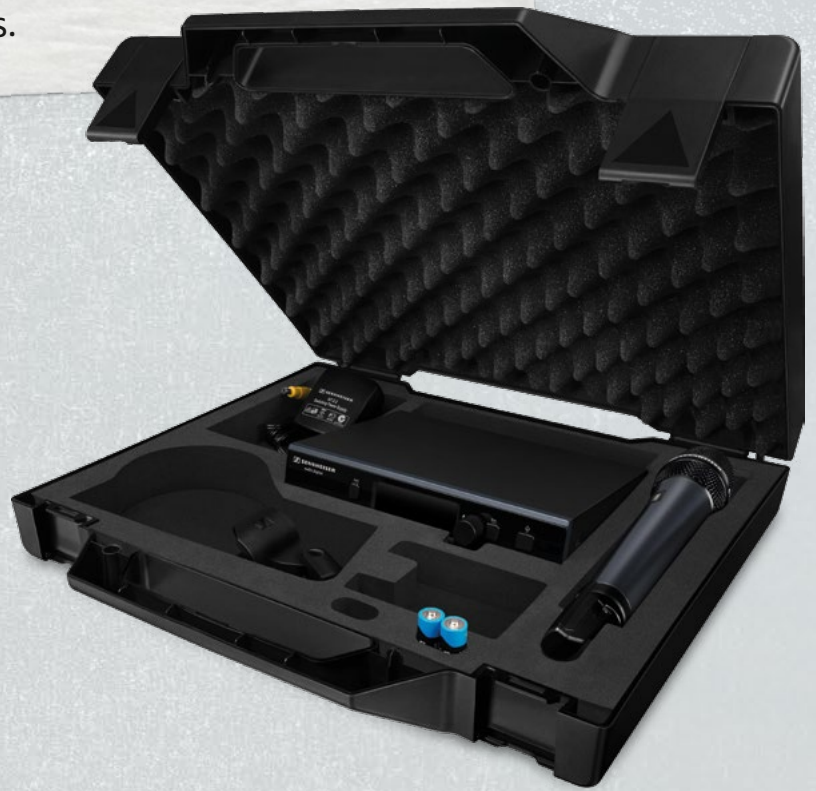
Transmitter and receiver are linked automatically at the push of a button. And the system intelligently adapts itself to your style and adjusts the sensitivity. Meaning ... You sound perfect—all the time. **evolution wireless D1** can be relied on from one show to the next. And the solid metal housing withstands the toughest conditions. What you have in your hand is as stable as the technology inside. At the very least.

Be D1 to Rule the Stage.

- **Six evolution capsules available:** match your voice perfectly
- **Wireless Link Protection:** reliable, multiple-secured transmission
- **Self-configuring system:** automatic pairing and automatic gain control
- **Stage-proof design:** metal housings and shock-mounted capsules

The Vocal Sets: Stay Individual

Everyone talks endlessly about being 'unique' — but they all still sing into the same standard mic. But every voice is different, so is every stage, every musical style. **evolution wireless D1** has the right microphone capsules, specially designed for every style, every application. After all, the capsule is the beating heart of the mic. And if the heart is not beating properly ... well, you'll get buried among the faceless masses.



Sets ew D1-835 and ew D1-845 Everything Else Is Just Standard

Our vocal sets supply you with everything you need on stage. You can choose between two capsules, which have long passed the test of time at gigs all over the world. Both are super easy to handle, and they compensate changing microphone distances trouble-free. Both make your voice cut through better in the mix. Instead of a centered, muffled sound, get ready for tight low mids and present treble. The cardioid response of the e 835 provides assured feedback rejection for when on-stage sound sources are mainly behind you, or when your monitors are primarily in front of you. The e 845 in particular is beautifully suited for solo vocals in louder settings. Its supercardioid design guards against lateral noise, ensuring feedback is rejected, while it delivers more leeway especially for higher pitches.

- Dynamic microphone
- Consistent sound quality (varying distances, moving off axis)
- Handles high sound pressure levels
- Isolates handling noise
- Hum compensating coil
- Excellent feedback rejection
- Rugged metal housing



You can also combine different parts in your **evolution wireless D1** setup: Every capsule of the evolution product line can be operated on the **evolution wireless D1** hand-held transmitter. This way you create exactly the combination that suits your stage.



e 865 Sensitive for Every Nuance

The entry level to the condenser class: The highly precise membrane picks up finest vocal details and transmits even extreme dynamics with ease. This is studio sound, available for live gigs. The supercardioid design makes it extremely reliable even in loud settings.

e 935 Extends Every Voice

Its balanced frequency range qualifies the e 935 for songs of every genre. It clearly gives the voice more space and positions it cleanly in front of loud instruments. This capsule lends even gentle voices an impressive intensity and size. Its cardioid design provides you with good protection from rear or upfront sound sources.



e 945 Presence All the Way to the Peak

The e 945 renders the natural sounds of the voice in particularly forceful colors. Its extraordinary presence and full body make it the perfect choice for stages where the vocals require strong emphasis or come in very high volumes. Its supercardioid design gives your vocals high protection against lateral sound sources.

e 965 Live Sound on the Highest Level

The flagship of the evolution series is a true condenser, large diaphragm microphone for pro stages. It gives the high-end a silky gloss and reproduces the lower mids in a warm, well-defined manner. The e 965 responds extremely quickly and transmits even the finest nuances in impressive detail. Depending on the stage setting, the pick-up pattern can be switched between gentle cardioid and more direct supercardioid.



The Instrument Set



YOU PULLED THE STRINGS FOR YEARS.
NOW BE **D1** TO BLOW THEM AWAY.



Cut Through

evolution wireless D1 channels your sound through every mix. Crystal-clear, powerful, dynamic, and forceful too, when it needs to be. The system adapts to your playing style in a fraction of a second. Powerful solo? The subtlest rhythm sections? **evolution wireless D1** conveys the lowest bass with the same aplomb it does challenging high pitches.



Whether it be a hard-fretted riff or a delicate solo, slap style or bass underlay. With its expanded dynamic range, **evolution wireless D1** precisely detects every oscillation of your strings. Our Wireless Link Protection then ensures that everything is delivered safely to your amp.

evolution wireless D1 gives you freedom on the stage and is very forgiving of rough handling, for the bodypack is protected by a solid metal housing. And the automatic transmitter-receiver pairing and gain control will have you up and running even faster.

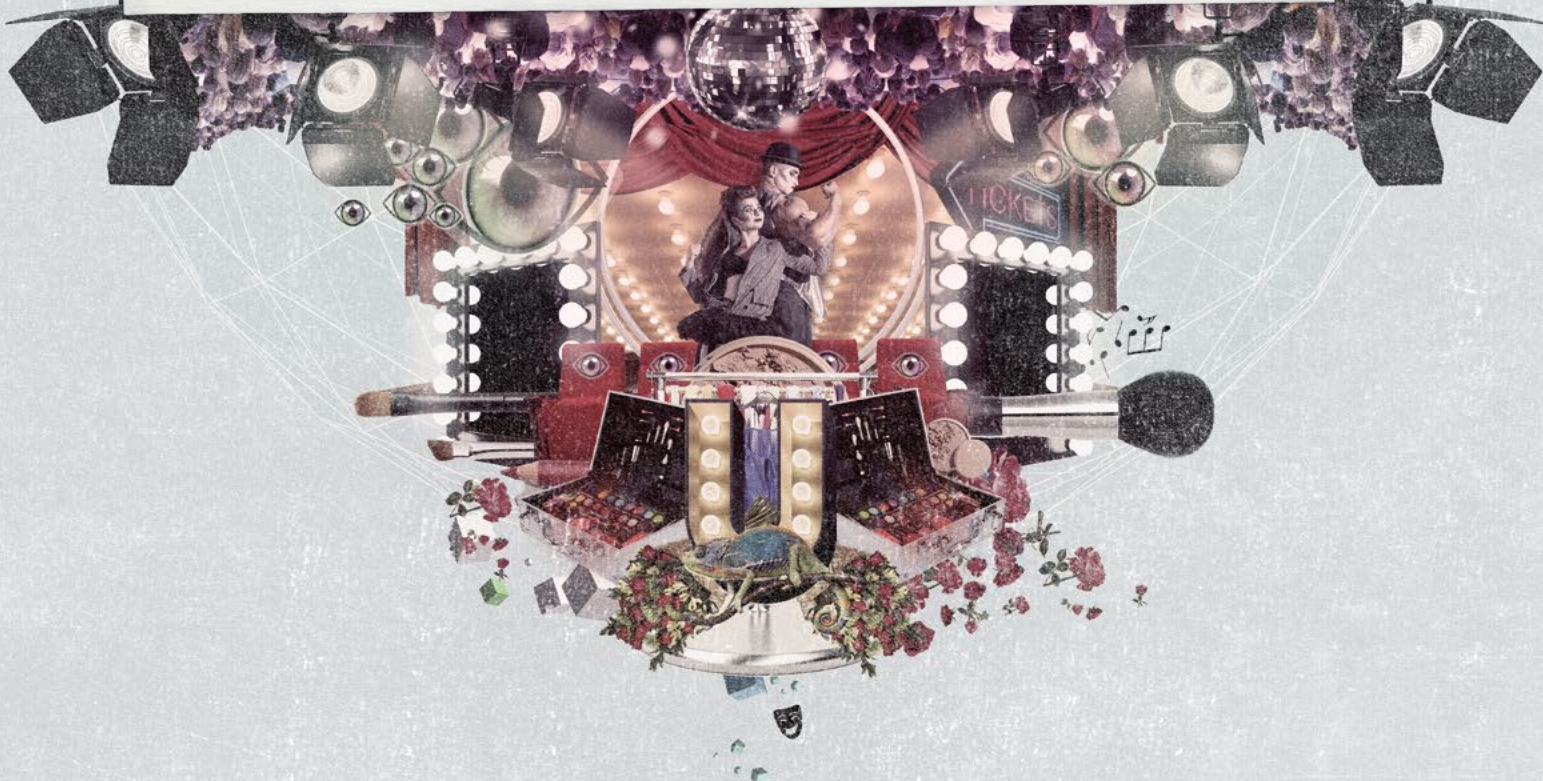
Be D1 to Steamroll All Doubts.

- **Extended dynamic range:** virtual 145 dB for optimum positioning in the mix
- **Lightweight bodypack transmitter,** robust guitar cable included
- **Up to 15 compatible channels** (under optimal conditions) in license-free 2.4 GHz band
- **Automatic frequency management**
- **Prevents interference:** Intelligent channel back-up allows co-existence with Wi-Fi and Bluetooth
- **iOS and Android app** for remote control and monitoring of the system
- **Rugged metal housing**

The Headmic Set



YOU ALREADY GOT THE TALENT.
BE **D1** TO SHOW YOURSELF.



Let it Out

evolution wireless D1 is the epitome of freedom: Free hands, free movement and interruption-free transmission. No matter if you sing, dance or be the cheerleader — your voice will always sound clear and vibrant.



Concentrate on your performance; **evolution wireless D1** takes care of the rest. You'll barely notice the ergonomic headset. But its sound is another matter. It gives your voice intensity and volume with maximum clarity.

The setup? Plug and play. **evolution wireless D1** automatically establishes the link between transmitter and receiver, adjusting your volume continuously. Our Wireless Link Protection also ensures that transmission remains extremely stable, even when things get a bit wild on the stage.

Be D1 to Exceed All Expectations.

- **Lightweight and robust:** headset microphone for excellent speech intelligibility
- **Up to 15 compatible channels** (under optimal conditions) in license-free 2.4 GHz band
- **Automatic frequency management**
- **Prevents interference:** Intelligent channel back-up allows co-existence with Wi-Fi and Bluetooth
- **Audio effects:** equalizer, de-esser, automatic gain control
- **iOS and Android app** for remote control and monitoring of the system
- **Sturdy metal housing**

The Lavalier Set



YOU'VE ONLY EVER GONE YOUR OWN WAY.
BE **D1** TO DRIVE THE POINT HOME.



Take up Position

Whether you are speaking to 20 or 2,000 people: **evolution wireless D1** allows you to reach every single person. It functions safely, reliably and brilliantly — with outstanding intelligibility of speech, freedom of movement and secure transmission.



The lavalier microphone **ME 2** is specially designed for speech, allowing each and every one of your words to be delivered in precisely the way you intend. And it is small, unobtrusive and easily attached. That, combined with the secure transmission gives you maximum freedom on the stage.

Two clicks of the button are all that is needed for **evolution wireless D1** to automatically establish a link between transmitter and receiver: On. Pair. Ready. The system also takes care of the gain control automatically. Your platform presentation could not start faster or simpler.

Be D1 to Electrify Your Audience.

- Unobtrusive professional clip-on microphone
- **Up to 15 compatible channels** (under optimal conditions) in license-free 2.4 GHz band
- **Automatic frequency management**
- **Prevents interference:** Intelligent channel back-up allows co-existence with Wi-Fi and Bluetooth
- **Audio effects:** equalizer, de-esser, automatic gain control
- **iOS and Android app** for remote control and monitoring of the system
- Rugged metal housing



Why is Everyone Talking about 2.4 GHz?

Radio frequencies are usually regulated differently from one country to the next. So users need a special license for certain radio microphones. The advantage: There are hardly any sources of interference and the regulations are clear. The drawback: effort and costs. The 2.4 GHz bandwidth, on the other hand, is free practically the whole world over. This is precisely the reason why other applications such as Wi-Fi and Bluetooth jostle about here. **evolution wireless D1** uses these frequencies too. On the one hand, this makes it very simple to use. But on the other, in a range with a lot of transmitters, it can get very crowded very quickly—you may know this from using your local Wi-Fi. Then comes the prob-

lem that some channels overlap each other, because they take up more bandwidth than the distance between them in the frequency band. And the last thing you want during your performance or presentation is a dropout. This is the very reason why we have put so much effort into **evolution wireless D1**. We have combined several spectrum management technologies to enable an extremely reliable use of this very busy frequency range. For example, **evolution wireless D1** can jump to the next free frequency extremely quickly if the 'traffic' gets overly congested. **evolution wireless D1** also has a few radio frequency technology tricks under the hood.

7.5

milliseconds: This is the length of time in which **evolution wireless D1** checks all the channels in your environs. That means: a safety check is performed 133 times a second to guarantee you optimum performance.

A Different Kind of Sound Check

Okay, the sound check went well. The mix is clear. But something is bound to change: soon there will be dozens or hundreds or thousands of people in front of your stage. And all of them will be carrying a cell phone. Smartphones that transmit data and seek out Wi-Fi networks, maintain Bluetooth connections etc. etc. Not a problem for **evolution wireless D1**—but give it a chance to sound out its surroundings shortly before your event; perform a mini-sound check in order to test the lines of the real-life environment.

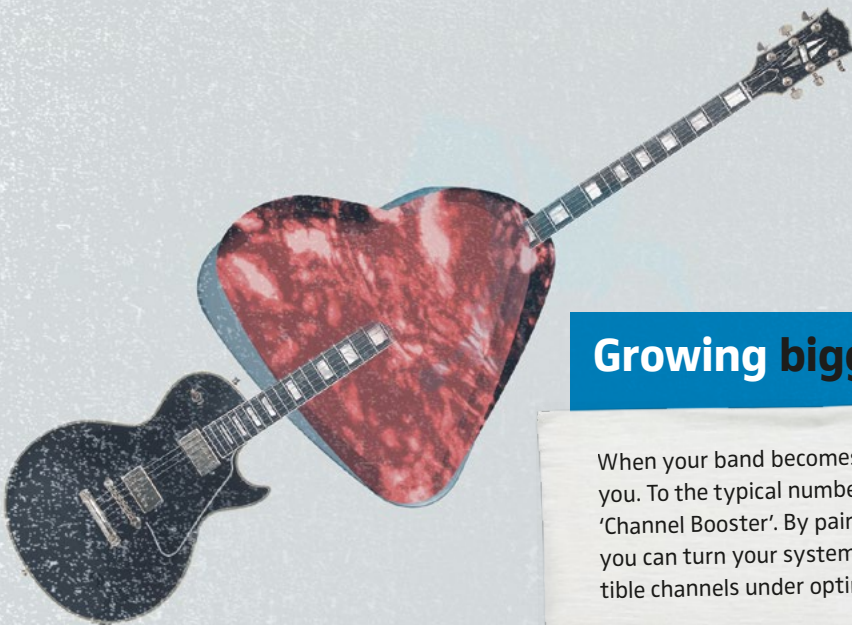
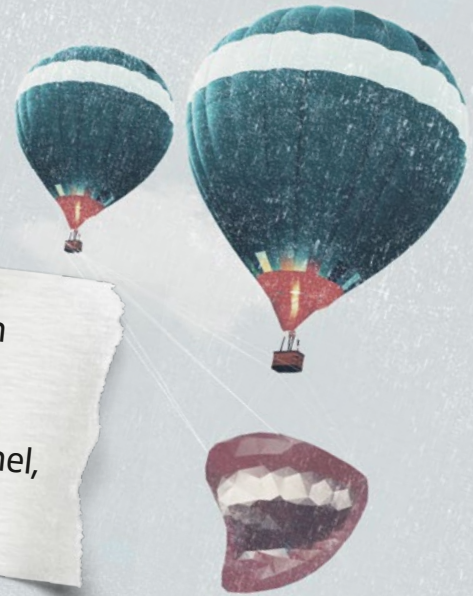




Positioning the Receivers

Every radio link loves clear visual axes. When there is nothing obstructing the radio wave path and there is a clear line of sight to the antennas, there will be greater room for the transmission range. Of course, the occasional wall may be part of the parameters. A thin light-weight wall will dampen the signal less than a solid reinforced concrete structure. Radio waves in the 2.4 GHz range cannot always penetrate through every obstacle as a matter of course. Therefore: always turn on the system and test it—without and with the audience.

2 channels are constantly available with **evolution wireless D1**: one is a transmission channel; one is a backup channel, continuously running in parallel.



Growing bigger? Boost your channels

When your band becomes bigger, **evolution wireless D1** simply grows with you. To the typical number of six channels you can use a special trick: the 'Channel Booster'. By pairing more receivers and transmitters, one at a time, you can turn your system into a multi-channel set-up with up to 15 compatible channels under optimal conditions.

Configure It Wirelessly

Naturally it is possible to configure a wireless microphone system wirelessly: **evolution wireless D1** can be remotely set up with an app (iOS or Android) using the Media Control Protocol. All the options lie in the palm of your hand.



145

decibels are achievable in the virtual dynamic range, thanks to the intelligent gain control. Meaning ... quiet interludes have the same crystal-clear sound as forceful loud sounds that follow briefly afterwards.

Concerning Your Energy

A self-evident fact: reliable technology is our responsibility. But the reliable supply of power is yours. Nothing influences the performance capability of a wireless system more than the choice of the power source. Conventional batteries deliver a slightly higher voltage (1.5V) and discharge in a quite straightline manner. This makes it easy to estimate their lifetimes. Alkali-manganese batteries have a significantly longer life than nickel versions. Power packs usually have a lower voltage (1.2V); they also follow a diffe-

rent discharge curve over their lifetime; whereas conventional batteries can still deliver energy for lengthy periods in a low-charge state, power packs quickly give up the ghost. Nickel or lithium-ion batteries have by far the largest capacity, but need to be maintained with special charging devices. Nickel-metal hydride combinations have a stronger tendency to self-discharge. Incidentally, **evolution wireless D1** constantly calculates the reliable transmission time for you; this is continuously visible in the display.



Accessories

Charging Units



CHG-2-EU/CHG-2-UK/CHG-2-US/CHG-2-AUS
Charging unit for SKM D1 and SK D1

Case



Transport case
Transport case for D1 sets (including foam)

Battery Packs



BA 10
Rechargeable battery pack for SKM D1



BA 30
Rechargeable battery pack for SK D1

Adaptor



GA 4
Rackmount kit for EM D1

Power Supply Units



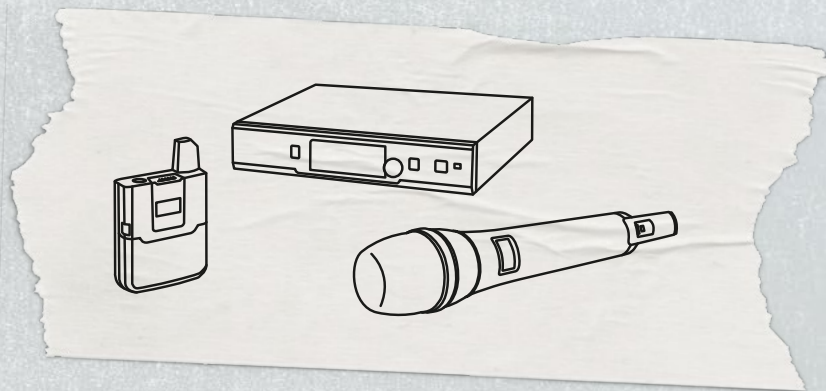
NT 5-10U-EU/NT 5-10U-UK/NT 5-10U-US/NT 5-10U-AUS
USB power supply

NT 12-4C-EU/NT 12-4C-UK/NT 12-4C-US
Power supply for EM D1

Pouch



HHP 2
Transport pouch for SKM D1 and SK D1



 **SENNHEISER**

Sennheiser electronic GmbH & Co. KG

Am Labor 1, 30900 Wedemark, Germany
www.sennheiser.com