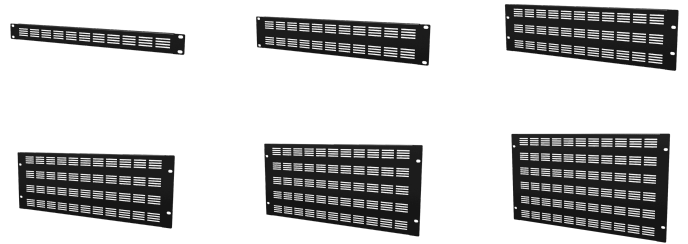
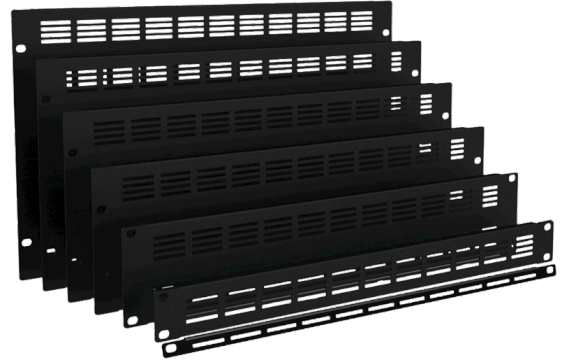


BSV Series

19" blind panels ventilated

A 19" blind cover made of steel with a plate thickness of 1.5 mm and provided with a black (RAL 9004) structured powder coating. The cover is provided with ventilation holes to help cool the stored equipment.



Product Features:

Dimensions	14.1 x 483 x 10 mm (W x H x D) (BSV003)
	43.7 x 483 x 10 mm (W x H x D) (BSV01)
	88.1 x 483 x 10 mm (W x H x D) (BSV02)
	132.5 x 483 x 10 mm (W x H x D) (BSV03)
	177 x 483 x 10 mm (W x H x D) (BSV04)
	221.5 x 483 x 10 mm (W x H x D) (BSV05)
	265.9 x 483 x 10 mm (W x H x D) (BSV06)
Weight	0.09 kg (BSV003)
	0.22 kg (BSV01)
	0.40 kg (BSV02)
	0.56 kg (BSV03)
	0.70 kg (BSV04)
	0.88 kg (BSV05)
	0.96 kg (BSV06)
Unit height	0.33 HE (BSV003)
	1 HE (BSV01)
	2 HE (BSV02)
	3 HE (BSV03)
	4 HE (BSV04)
	5 HE (BSV05)
	6 HE (BSV06)

Variants:

- BSV003 - 0.33 units
- BSV01 - 1 unit
- BSV02 - 2 units
- BSV03 - 3 units
- BSV04 - 4 units
- BSV05 - 5 units
- BSV06 - 6 units