



▶▶ NEUMANN.BERLIN

- ▶ BCM 104
- ▶ BCM 705

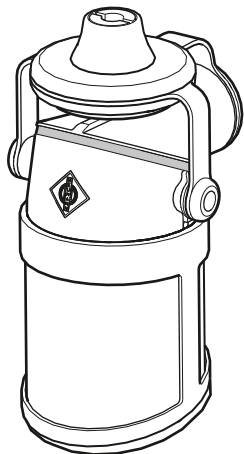
Quick Guide
 Kurzanleitung
 Guide rapide
 Guida rapida
 Guía de inicio rápido
 Pikaohje
 Γρήγορος οδηγός
 Kısa Kılavuz
 Краткая инструкция

Guia rápido
 Beknopte handleiding
 Krótka instrukcja obsługi
 Snabbguide
 Kort vejledning
 快速指南
 クイックガイド
 퀵 가이드

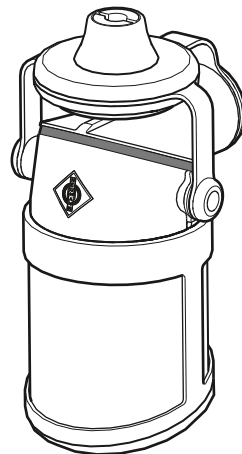
PUBL. 06/18 - 575809/A01

GEORG NEUMANN GMBH · LEIPZIGER STR. 112 · 10117 BERLIN · GERMANY
 TEL +49 (0)30 / 41 77 24 -0 · FAX -50
 HEADOFFICE@NEUMANN.COM · WWW.NEUMANN.COM

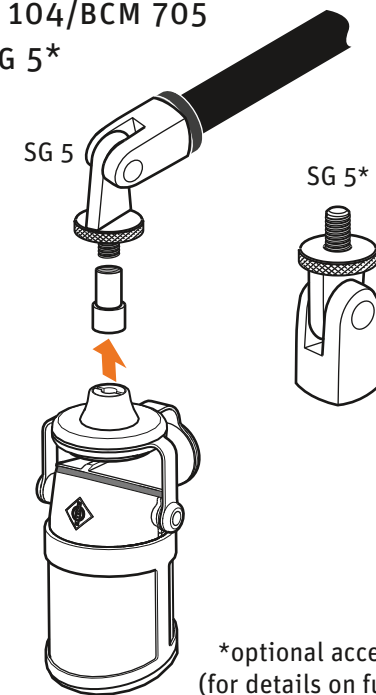
BCM 104



BCM 705

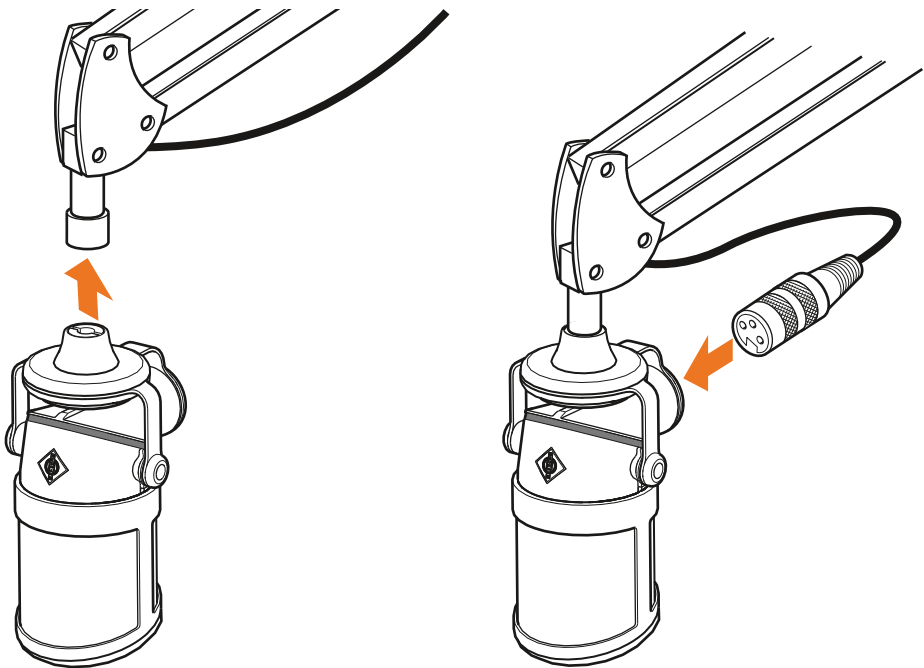


BCM 104/BCM 705 & SG 5*

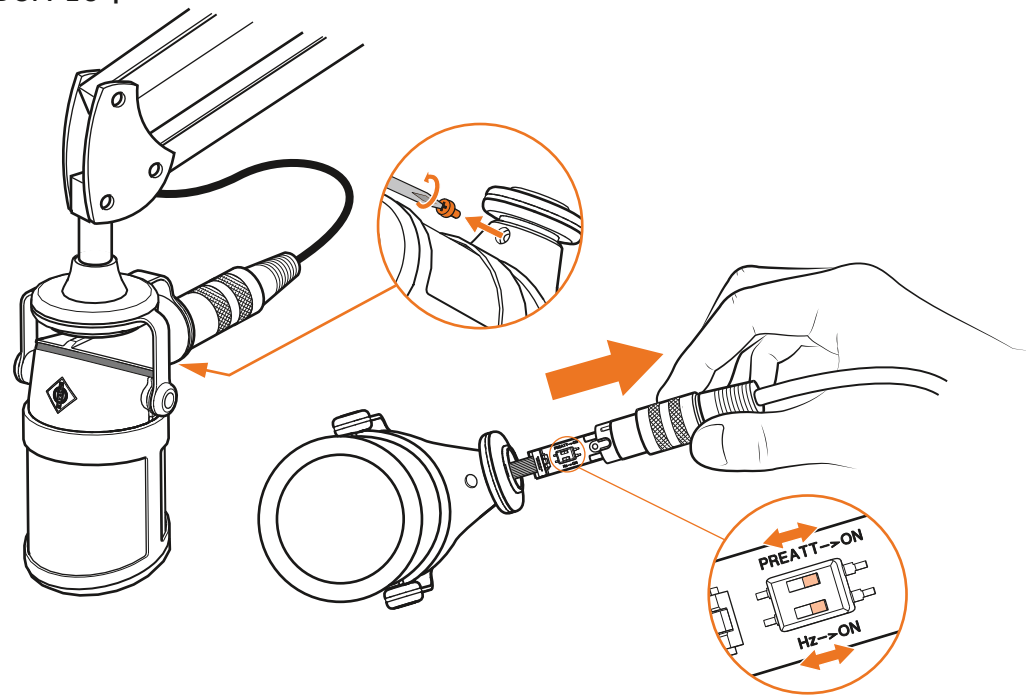


*optional accessory
 (for details on further optional accessories see www.neumann.com)

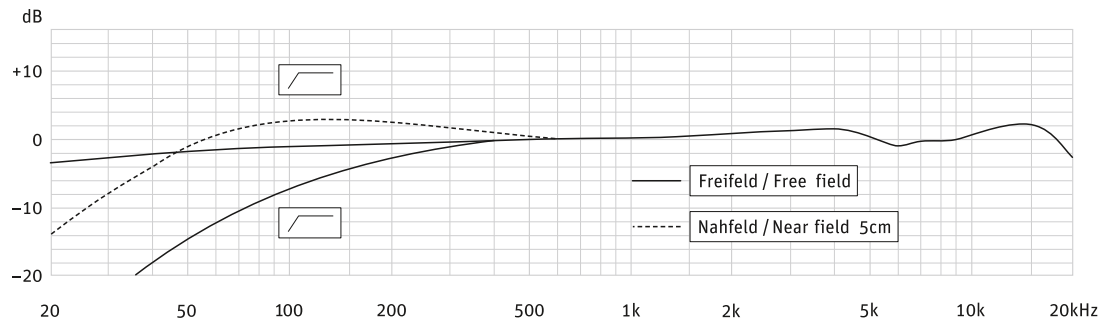
BCM 104/BCM 705



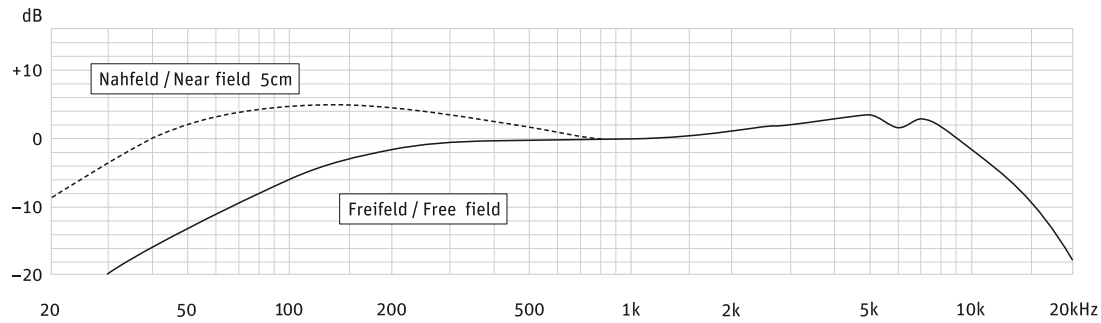
BCM 104



BCM 104



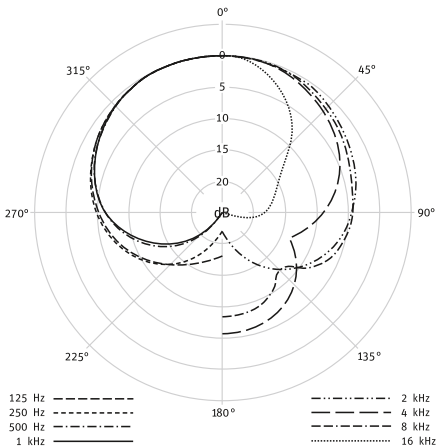
BCM 705



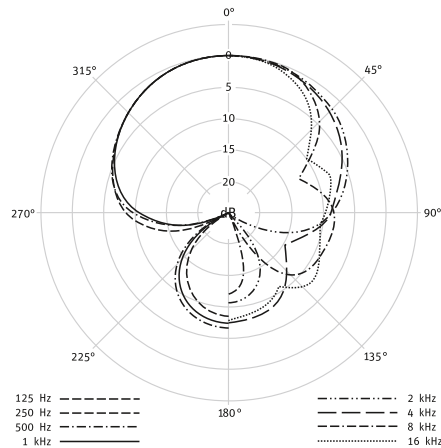
Instruction manual | Bedienungsanleitung |
 Notice d'emploi | Istruzioni per l'uso |
 Instrucciones de manejo | Manual de instruções |
 Gebruiksaanwijzing | Instrukcja obsługi |
 Bruksanvisning | Betjeningsvejledning | Käyttöohje |
 Οδηγίες λειτουργίας | Kullanım kılavuzu |
 Инструкция по эксплуатации | 使用说明书 |
 取扱説明書 | 사용 설명서 |

www.neumann.com | BCM 104 | BCM 705

BCM 104



BCM 705



Specifications

Specifications	BCM 104	BCM 705
Acoustic operating principle	Pressure gradient transducer	
Directional pattern	cardioid	hypercardioid
Frequency range	20 Hz - 20 kHz	
Sensitivity at 1 kHz into 1 kΩ	22 mV/Pa \cong -33.1 dBV \pm 1 dB	1.7 mV/Pa \cong -55.4 dB \pm 1 dB
Rated impedance	50 Ω	200 Ω
Rated load impedance	1000 Ω	10000 Ω
Signal-to-noise ratio, CCIR ¹⁾ (rel. 94 dB SPL)	76 dB	62 dB
Signal-to-noise ratio, A-weighted ¹⁾ (rel. 94 dB SPL)	87 dB	76 dB
Equivalent noise level, CCIR ¹⁾	18 dB	32 dB
Equivalent noise level, A-weighted ¹⁾	7 dB-A	18 dB-A
Maximum SPL for THD \leq 0.5% ²⁾	138 dB	-
Maximum SPL with preattenuation ²⁾	152 dB	-
Maximum output voltage	10 dBu	-
Supply voltage (P48, IEC 61938)	48 V \pm 4 V	-
Current consumption (P48, IEC 61938)	3.2 mA	-
Weight	500 g	
Dimensions (diameter / length)	\varnothing 64 mm / 85 mm	
Operating temperature range	0 °C - +70 °C (32 °F - 158 °F)	
Storage temperature range	-20 °C - +70 °C (-4 °F - 158 °F)	
Humidity range	max. 90 % at +20 °C	

¹⁾ according to IEC 60268-1; CCIR-weighting according to CCIR 468-3, quasi peak; A-weighting according to IEC 61672-1, RMS

²⁾ measured as equivalent el. input signal